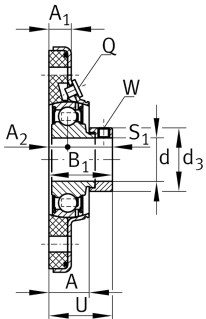
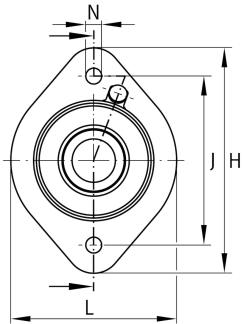
**PCSTK30-208-XL**

Flanged housing unit

Flanged housing unit PCSTK...-208-XL

X-life

Technical information

**Your current product variant**

Material Steel sheet

Main Dimensions & Performance Data

d	30 mm	Bore diameter
L	115 mm	Flange width
H	156 mm	Height flange
U	44 mm	Total height unit
C _r	32.500 N	Basic dynamic load rating, radial
C _{0r}	19.800 N	Basic static load rating, radial
C _{0r G}	6.000 N	Load carrying capacity (housing)
≈m	1,12 kg	Weight

Mounting dimensions

J	117 mm	Distance fixing bore
N	11 mm	Fixing bore
n	2	Number of screwing holes



Dimensions

A	28 mm	Height housing
A ₁	15,5 mm	Thickness of flange
A ₂	13 mm	Distance raceway
S ₁	31,05 mm	Thickness
Q	Rp1/8	Connection thread for lubrication

Additional information

1	Number of housings
1	Number of housings 2
FLAN-CST-AH02	Housing
FLAN80-CS-VA	Housing (Part 2)
GRAE30-208-NPP- B-FA107/125.5	Bearing designation