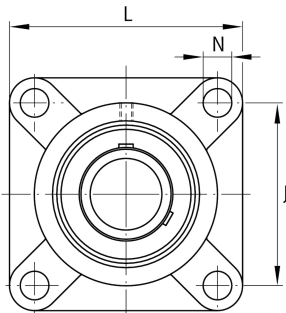
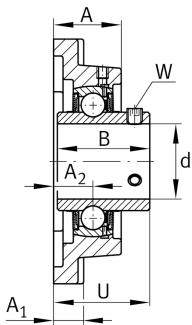


**FAG****UCF206-17** [↗](#)

Flanged housing unit

Flanged housing unit UCF

Technical information

**Your current product variant**

Material	GG	Grey cast iron
----------	----	----------------

Main Dimensions & Performance Data

d	26,988 mm	Bore diameter
L	108 mm	Flange width
U	40,2 mm	Total height unit
C _r	20.700 N	Basic dynamic load rating, radial
C _{0r}	11.300 N	Basic static load rating, radial
C _{ur}	590 N	Fatigue load limit, radial
≈m	1,15 kg	Weight

Mounting dimensions

J	83 mm	Distance fixing bore
N	12 mm	Fixing bore
N ₁	83 mm	Distance fixing bore
n	4	Number of screwing holes



Dimensions

A	31 mm	Height housing
A ₁	14 mm	Thickness of flange
A ₂	18 mm	Distance raceway
B	38,1 mm	Width
Q	M6	Connection thread for lubrication

Additional information

1	Number of housings
F206	Housing
UC206-17	Bearing designation

Temperature range

T _{min}	-20 °C	Operating temperature min.
T _{max}	120 °C	Operating temperature max.