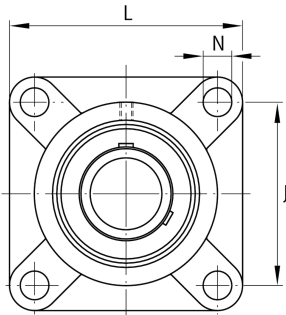
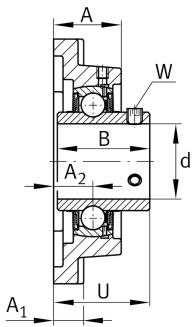


**FAG****UCF208**

Flanged housing unit

Flanged housing unit UCF

Technical information

**Your current product variant**

Material	GG	Grey cast iron
----------	----	----------------

Main Dimensions & Performance Data

d	40 mm	Bore diameter
L	130 mm	Flange width
U	51,2 mm	Total height unit
C _r	34.500 N	Basic dynamic load rating, radial
C _{0r}	19.800 N	Basic static load rating, radial
C _{ur}	840 N	Fatigue load limit, radial
≈m	1,934 kg	Weight

Mounting dimensions

J	102 mm	Distance fixing bore
N	16 mm	Fixing bore
n	4	Number of screwing holes

Dimensions

A	36 mm	Height housing
A ₁	16 mm	Thickness of flange
A ₂	21 mm	Distance raceway
B	49,2 mm	Width
Q	M6	Connection thread for lubrication



Additional information

1	Number of housings
F208	Housing
UC208	Bearing designation

Temperature range

T _{min}	-20 °C	Operating temperature min.
T _{max}	120 °C	Operating temperature max.