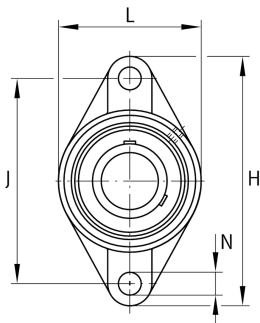
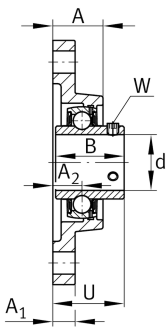


**FAG****UCFL205-15** [↗](#)

Flanged housing unit

Flanged housing unit UCFL

Technical information

**Your current product variant**

Material	GG	Grey cast iron
----------	----	----------------

Main Dimensions & Performance Data

d	23,812 mm	Bore diameter
L	68 mm	Flange width
H	130 mm	Height flange
U	35,8 mm	Total height unit
C _r	14.900 N	Basic dynamic load rating, radial
C _{0r}	7.800 N	Basic static load rating, radial
C _{ur}	410 N	Fatigue load limit, radial
≈m	0,65 kg	Weight

Mounting dimensions

J	99 mm	Distance fixing bore
N	16 mm	Fixing bore
n	2	Number of screwing holes



Dimensions

A	27 mm	Height housing
A ₁	15 mm	Thickness of flange
A ₂	16 mm	Distance raceway
B	34,1 mm	Width
Q	M6	Connection thread for lubrication

Additional information

1	Number of housings
FL205	Housing
UC205-15	Bearing designation

Temperature range

T _{min}	-20 °C	Operating temperature min.
T _{max}	120 °C	Operating temperature max.