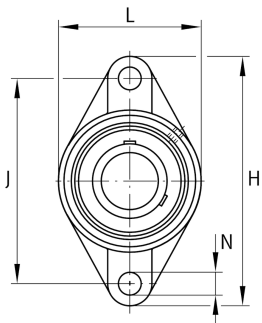


**FAG****UCFL208-24** [↗](#)

Flanged housing unit

Flanged housing unit UCFL

## Technical information

**Your current product variant**

Material	GG	Grey cast iron
----------	----	----------------

**Main Dimensions & Performance Data**

d	38,1 mm	Bore diameter
L	100 mm	Flange width
H	175 mm	Height flange
U	51,2 mm	Total height unit
C <sub>r</sub>	34.500 N	Basic dynamic load rating, radial
C <sub>0r</sub>	19.800 N	Basic static load rating, radial
C <sub>ur</sub>	840 N	Fatigue load limit, radial
≈m	1,53 kg	Weight

**Mounting dimensions**

J	144 mm	Distance fixing bore
N	16 mm	Fixing bore
n	2	Number of screwing holes



### Dimensions

A	36 mm	Height housing
A <sub>1</sub>	16 mm	Thickness of flange
A <sub>2</sub>	21 mm	Distance raceway
B	49,2 mm	Width
Q	M6	Connection thread for lubrication

### Additional information

1	Number of housings
FL208	Housing
UC208-24	Bearing designation

### Temperature range

T <sub>min</sub>	-20 °C	Operating temperature min.
T <sub>max</sub>	120 °C	Operating temperature max.