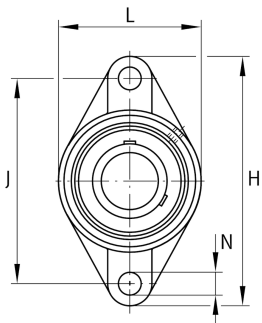


**FAG****UCFL208-25**

Flanged housing unit

Flanged housing unit UCFL

Technical information

**Your current product variant**

Material	GG	Grey cast iron
----------	----	----------------

Main Dimensions & Performance Data

d	39,688 mm	Bore diameter
L	100 mm	Flange width
H	175 mm	Height flange
U	51,2 mm	Total height unit
C _r	34.500 N	Basic dynamic load rating, radial
C _{0r}	19.800 N	Basic static load rating, radial
C _{ur}	1.030 N	Fatigue load limit, radial
≈m	1,49 kg	Weight

Mounting dimensions

J	144 mm	Distance fixing bore
N	16 mm	Fixing bore
n	2	Number of screwing holes



Dimensions

A	36 mm	Height housing
A ₁	16 mm	Thickness of flange
A ₂	21 mm	Distance raceway
B	49,2 mm	Width
Q	M6	Connection thread for lubrication

Additional information

1	Number of housings
FL208	Housing
UC208-25	Bearing designation

Temperature range

T _{min}	-20 °C	Operating temperature min.
T _{max}	120 °C	Operating temperature max.