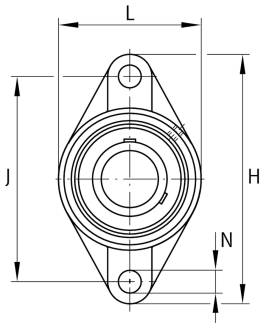
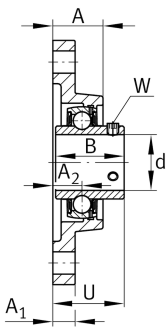


**FAG****UCFL210-30**

Flanged housing unit

Flanged housing unit UCFL

## Technical information

**Your current product variant**

Material	GG	Grey cast iron
----------	----	----------------

**Main Dimensions & Performance Data**

d	47,625 mm	Bore diameter
L	115 mm	Flange width
H	197 mm	Height flange
U	54,6 mm	Total height unit
C <sub>r</sub>	37.500 N	Basic dynamic load rating, radial
C <sub>0r</sub>	23.200 N	Basic static load rating, radial
C <sub>ur</sub>	1.210 N	Fatigue load limit, radial
≈m	2,3 kg	Weight

**Mounting dimensions**

J	157 mm	Distance fixing bore
N	19 mm	Fixing bore
n	2	Number of screwing holes



### Dimensions

A	40 mm	Height housing
A <sub>1</sub>	18 mm	Thickness of flange
A <sub>2</sub>	22 mm	Distance raceway
B	51,6 mm	Width
Q	M6	Connection thread for lubrication

### Additional information

1	Number of housings
FL210	Housing
UC210-30	Bearing designation

### Temperature range

T <sub>min</sub>	-20 °C	Operating temperature min.
T <sub>max</sub>	120 °C	Operating temperature max.