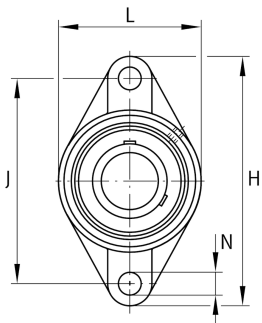


**FAG****UCFL213-40**

Flanged housing unit

Flanged housing unit UCFL

Technical information

**Your current product variant**

| | | |
|----------|----|----------------|
| Material | GG | Grey cast iron |
|----------|----|----------------|

Main Dimensions & Performance Data

| | | |
|-----------------|----------|-----------------------------------|
| d | 63,5 mm | Bore diameter |
| L | 155 mm | Flange width |
| H | 258 mm | Height flange |
| U | 69,7 mm | Total height unit |
| C _r | 61.000 N | Basic dynamic load rating, radial |
| C _{0r} | 40.000 N | Basic static load rating, radial |
| C _{ur} | 2.090 N | Fatigue load limit, radial |
| ≈m | 4,76 kg | Weight |

Mounting dimensions

| | | |
|---|--------|--------------------------|
| J | 210 mm | Distance fixing bore |
| N | 23 mm | Fixing bore |
| n | 2 | Number of screwing holes |



Dimensions

| | | |
|----------------|---------|-----------------------------------|
| A | 50 mm | Height housing |
| A ₁ | 24 mm | Thickness of flange |
| A ₂ | 30 mm | Distance raceway |
| B | 65,1 mm | Width |
| Q | M6 | Connection thread for lubrication |

Additional information

| | |
|----------|---------------------|
| 1 | Number of housings |
| FL213 | Housing |
| UC213-40 | Bearing designation |

Temperature range

| | | |
|------------------|--------|----------------------------|
| T _{min} | -20 °C | Operating temperature min. |
| T _{max} | 120 °C | Operating temperature max. |