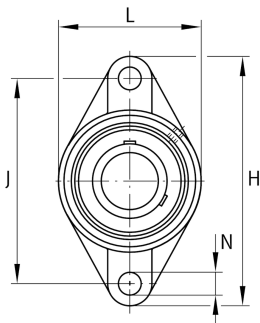
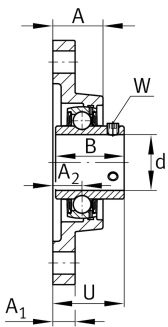


**FAG****UCFL213-41** [↗](#)

Flanged housing unit

Flanged housing unit UCFL

Technical information

**Your current product variant**

Material	GG	Grey cast iron
----------	----	----------------

Main Dimensions & Performance Data

d	65,087 mm	Bore diameter
L	155 mm	Flange width
H	258 mm	Height flange
U	69,7 mm	Total height unit
C _r	61.000 N	Basic dynamic load rating, radial
C _{0r}	40.000 N	Basic static load rating, radial
C _{ur}	2.090 N	Fatigue load limit, radial
≈m	4,68 kg	Weight

Mounting dimensions

J	210 mm	Distance fixing bore
N	23 mm	Fixing bore
n	2	Number of screwing holes



Dimensions

A	50 mm	Height housing
A ₁	24 mm	Thickness of flange
A ₂	30 mm	Distance raceway
B	65,1 mm	Width
Q	M6	Connection thread for lubrication

Additional information

1	Number of housings
FL213	Housing
UC213-41	Bearing designation

Temperature range

T _{min}	-20 °C	Operating temperature min.
T _{max}	120 °C	Operating temperature max.