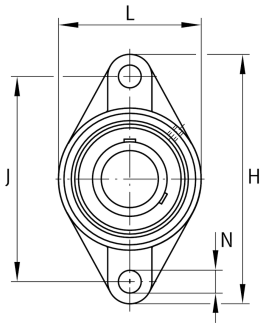


**FAG****UCFL218** [↗](#)

Flanged housing unit

Flanged housing unit UCFL

Technical information

**Your current product variant**

Material	GG	Grey cast iron
----------	----	----------------

Main Dimensions & Performance Data

d	90 mm	Bore diameter
L	205 mm	Flange width
H	320 mm	Height flange
U	96,3 mm	Total height unit
C _r	102.000 N	Basic dynamic load rating, radial
C _{0r}	72.000 N	Basic static load rating, radial
C _{ur}	3.350 N	Fatigue load limit, radial
≈m	10,39 kg	Weight

Mounting dimensions

J	265 mm	Distance fixing bore
N	25 mm	Fixing bore
n	2	Number of screwing holes



Dimensions

A	68 mm	Height housing
A ₁	26 mm	Thickness of flange
A ₂	40 mm	Distance raceway
B	96 mm	Width
Q	M6	Connection thread for lubrication

Additional information

1	Number of housings
FL218	Housing
UC218	Bearing designation

Temperature range

T _{min}	-20 °C	Operating temperature min.
T _{max}	120 °C	Operating temperature max.