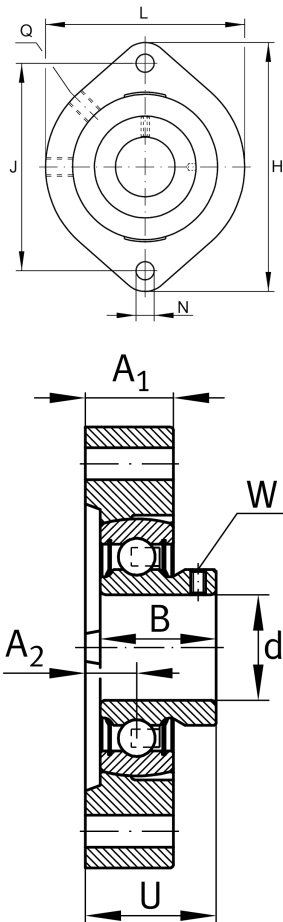


**GLCTEY25**

Flanged housing unit

Flanged housing unit GLCTEY

Technical information

**Your current product variant**

Material	GG	Grey cast iron
----------	----	----------------

Main Dimensions & Performance Data

d	25 mm	Bore diameter
L	71 mm	Flange width
H	97 mm	Height flange
U	29,4 mm	Total height unit
C _r	14.000 N	Basic dynamic load rating, radial
C _{0r}	7.800 N	Basic static load rating, radial
m	0,43 kg	Weight

Mounting dimensions

J	76,2 mm	Distance fixing bore
N	9 mm	Fixing bore
W	2,5 mm	Width of flats
n	2	Number of screwing holes

Dimensions

A ₁	19,5 mm	Thickness of flange
A ₂	9,9 mm	Distance raceway
B	27 mm	Width
Q	M6	Connection thread for lubrication



Additional information

GEHGLCTE05-GG	Housing
GAY25-XL-NPP-B	Bearing designation

Temperature range

T _{min}	-20 °C	Operating temperature min.
T _{max}	100 °C	Operating temperature max.