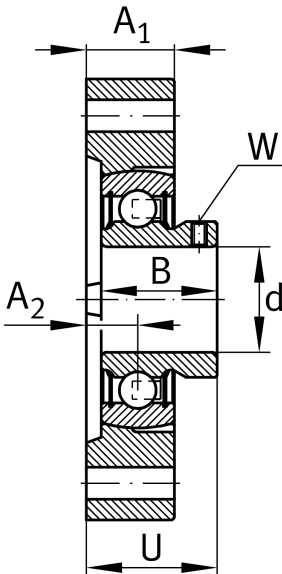
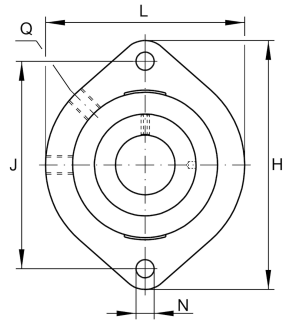


**GLCTEY30**

Flanged housing unit

Flanged housing unit GLCTEY

## Technical information

**Your current product variant**

Material	GG	Grey cast iron
----------	----	----------------

**Main Dimensions & Performance Data**

d	30 mm	Bore diameter
L	84 mm	Flange width
H	112,5 mm	Height flange
U	32,4 mm	Total height unit
C <sub>r</sub>	19.500 N	Basic dynamic load rating, radial
C <sub>0r</sub>	11.300 N	Basic static load rating, radial
m	0,69 kg	Weight

**Mounting dimensions**

J	90,5 mm	Distance fixing bore
N	11,5 mm	Fixing bore
n	2	Number of screwing holes

**Dimensions**

A <sub>1</sub>	22,5 mm	Thickness of flange
A <sub>2</sub>	11,4 mm	Distance raceway
B	30 mm	Width
Q	M6	Connection thread for lubrication



### Additional information

GEHGLCTE06-GG	Housing
GAY30-XL-NPP-B	Bearing designation

### Temperature range

T <sub>min</sub>	-20 °C	Operating temperature min.
T <sub>max</sub>	100 °C	Operating temperature max.