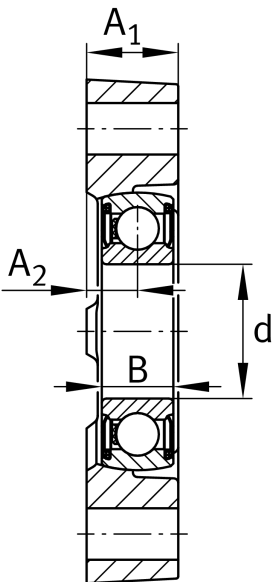
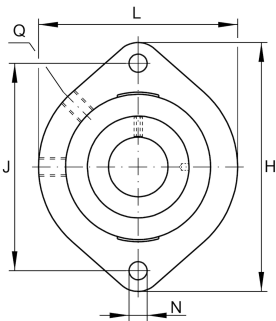
**BLCTE30-XL**

Flanged housing unit

Flanged housing unit BLCTE..-XL

X-life

## Technical information



## Your current product variant

Material	GG	Grey cast iron
----------	----	----------------

## Main Dimensions &amp; Performance Data

d	30 mm	Bore diameter
L	84 mm	Flange width
H	112,5 mm	Height flange
C <sub>r</sub>	19.500 N	Basic dynamic load rating, radial
C <sub>0r</sub>	11.300 N	Basic static load rating, radial
≈m	0,65 kg	Weight

## Mounting dimensions

J	90,5 mm	Pitch circle diameter (holes)
N	11,5 mm	Fixing bore

## Dimensions

A <sub>1</sub>	22,5 mm	Thickness of flange
A <sub>2</sub>	11,4 mm	Distance raceway
B	16 mm	Width



View product details on medias

24.04.2026, 07:37:06 UTC

SCHAEFFLER

### Additional information

GEHLCTE06-GG	Housing
206-XL-NPP-B	Bearing designation

### Temperature range

T <sub>min</sub>	-20 °C	Operating temperature min.
T <sub>max</sub>	100 °C	Operating temperature max.