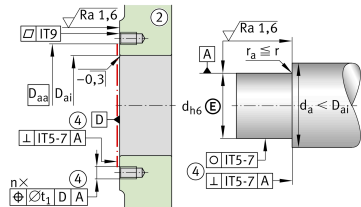
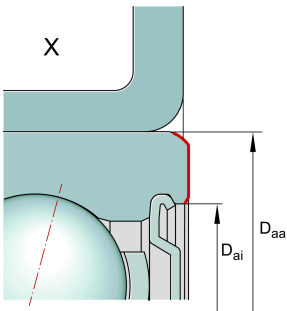
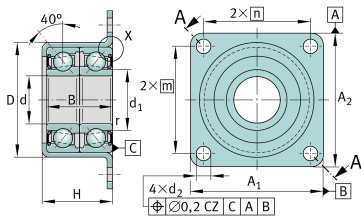
**ZKLR1244-2RS**

Flanged housing unit

Angular contact ball bearing units
ZKLR..-2RS, double direction, for screw
mounting, lip seals on both sides

Technical information



Your current product variant

Type of seal	2RS	Contact lip seals on both sides
--------------	-----	---------------------------------

Main Dimensions & Performance Data

d	12 mm	Bore diameter
	0 mm	Bore diameter upper tolerance
	-0,007 mm	Bore diameter lower tolerance
D	35,45 mm	Outside diameter bearing pot
	0,03 mm	Outside diameter bearing pot upper tolerance
	-0,01 mm	Outside diameter bearing pot lower tolerance
B	20 mm	Width, inner ring
	0,25 mm	Inner ring width upper tolerance
	-0,25 mm	Inner ring width lower tolerance
C_r	13.600 N	Basic dynamic load rating, radial
C_{0r}	8.500 N	Basic static load rating, radial
C_a	13.200 N	Basic dynamic load rating, axial
C_{0a}	17.900 N	Basic static load rating, axial
C_{ur}	445 N	Fatigue load limit, radial
M_{RL}	0,16 Nm	Bearing friction torque
$\approx m$	0,12 kg	Weight



Mounting dimensions

d_a	14 mm	Diameter shaft shoulder
D_{ai}	27 mm	Support diameter outer ring inside
$D_{aa\ min}$	32 mm	Minimum support diameter outer ring outside
	M6	Screw size
n	4	Number of screws
t_1	0,2 mm	Position bore in the housing

Dimensions

d_1	16,6 mm	Rib diameter inner ring
r_{\min}	0,3 mm	Minimum chamfer dimension
d_2	6,6 mm	Fixing boring diameter
A_1	44 mm	Flange width
A_2	50 mm	Height flange
m	38 mm	Bore distance height
n	32 mm	Bore distance width
H	22 mm	Height housing
	0 mm	Height housing upper tolerance
	-0,5 mm	Height housing lower tolerance

Additional information

c_{aL}	170 N/ μ m	Rigidity axial
M_m	0,01 kg*cm ²	Mass moment of inertia
	7 μ m	Axial runout
	ZM12	Locknut 1
M_A	8 Nm	Tightening torque nut