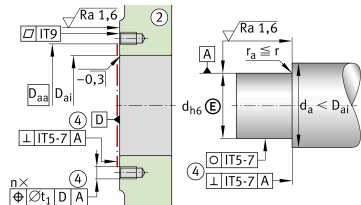
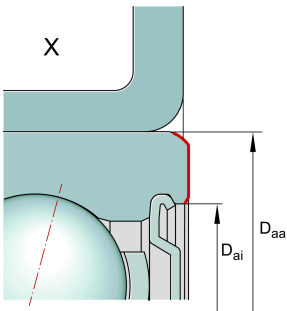
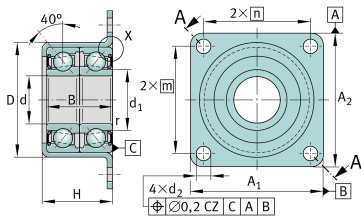
**ZKLR1547-2RS**

Flanged housing unit

Angular contact ball bearing units
ZKLR..-2RS, double direction, for screw
mounting, lip seals on both sides

Technical information



Your current product variant

Sealing	2RS	Contact lip seals on both sides
---------	-----	---------------------------------

Main Dimensions & Performance Data

d	15 mm	Bore diameter
	0 mm	Bore diameter upper tolerance
	-0,007 mm	Bore diameter lower tolerance
D	38,45 mm	Outside diameter bearing pot
	0,03 mm	Outside diameter bearing pot upper tolerance
	-0,01 mm	Outside diameter bearing pot lower tolerance
B	22 mm	Width, inner ring
	0,25 mm	Inner ring width upper tolerance
	-0,25 mm	Inner ring width lower tolerance
C _r	16.700 N	Basic dynamic load rating, radial
C _{0r}	10.700 N	Basic static load rating, radial
C _a	16.400 N	Basic dynamic load rating, axial
C _{0a}	22.400 N	Basic static load rating, axial
C _{ur}	560 N	Fatigue load limit, radial
M _{RL}	0,2 Nm	Bearing friction torque
≈m	143,1 g	Weight



Mounting dimensions

d_a	17,5 mm	Diameter shaft shoulder
D_{ai}	29 mm	Support diameter outer ring inside
$D_{aa\ min}$	35 mm	Minimum support diameter outer ring outside
	M6	Screw size
n	4	Number of screws
t_1	0,2 mm	Position bore in the housing

Dimensions

d_1	18 mm	Rib diameter inner ring
r_{\min}	0,3 mm	Minimum chamfer dimension
d_2	6,6 mm	Fixing boring diameter
A_1	47 mm	Flange width
A_2	51 mm	Height flange
m	39 mm	Bore distance height
n	35 mm	Bore distance width
H	24 mm	Height housing
	0 mm	Height housing upper tolerance
	-0,5 mm	Height housing lower tolerance

Additional information

c_{aL}	200 N/ μ m	Rigidity axial
M_m	0,018 kg*cm ²	Mass moment of inertia
	7 μ m	Axial runout
	ZM15	Locknut 1
	AM15	Locknut 2
M_A	10 Nm	Tightening torque nut