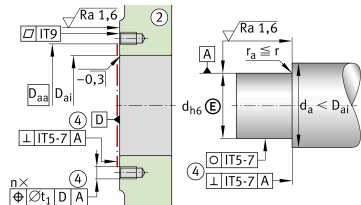
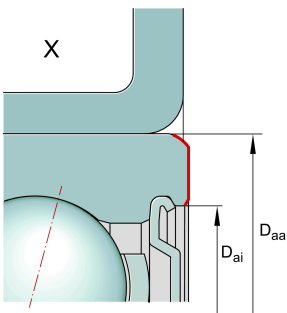
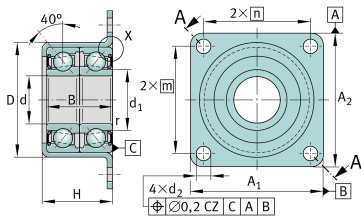
**ZKLR2060-2RS**

Flanged housing unit

Angular contact ball bearing units
ZKLR..-2RS, double direction, for screw
mounting, lip seals on both sides

Technical information



Your current product variant

Type of Sealing	2RS	Contact lip seals on both sides
-----------------	-----	---------------------------------

Main Dimensions & Performance Data

d	20 mm	Bore diameter
	0 mm	Bore diameter upper tolerance
	-0,008 mm	Bore diameter lower tolerance
D	50,45 mm	Outside diameter bearing pot
	0,03 mm	Outside diameter bearing pot upper tolerance
	-0,01 mm	Outside diameter bearing pot lower tolerance
B	28 mm	Width, inner ring
	0,25 mm	Inner ring width upper tolerance
	-0,25 mm	Inner ring width lower tolerance
C _r	28.000 N	Basic dynamic load rating, radial
C _{0r}	19.100 N	Basic static load rating, radial
C _a	27.500 N	Basic dynamic load rating, axial
C _{0a}	40.000 N	Basic static load rating, axial
C _{ur}	990 N	Fatigue load limit, radial
M _{RL}	0,3 Nm	Bearing friction torque
≈m	0,29 kg	Weight



Mounting dimensions

d_a	24 mm	Diameter shaft shoulder
D_{ai}	39 mm	Support diameter outer ring inside
$D_{aa\ min}$	47 mm	Minimum support diameter outer ring outside
	M6	Screw size
n	4	Number of screws
t_1	0,2 mm	Position bore in the housing

Dimensions

d_1	24,4 mm	Rib diameter inner ring
r_{\min}	0,3 mm	Minimum chamfer dimension
d_2	6,6 mm	Fixing boring diameter
A_1	60 mm	Flange width
A_2	60 mm	Height flange
m	47 mm	Bore distance height
n	47 mm	Bore distance width
H	30 mm	Height housing
	0 mm	Height housing upper tolerance
	-0,5 mm	Height housing lower tolerance

Additional information

c_{aL}	250 N/ μ m	Rigidity axial
M_m	0,263 kg*cm ²	Mass moment of inertia
	8 μ m	Axial runout
	ZM20	Locknut 1
	AM20	Locknut 2
M_A	18 Nm	Tightening torque nut