

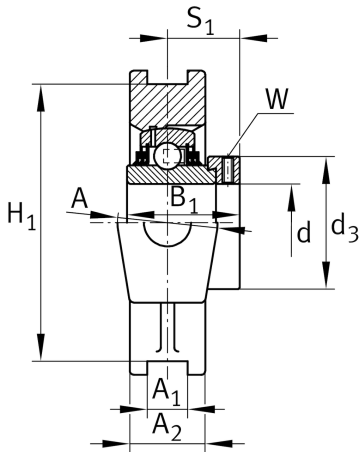
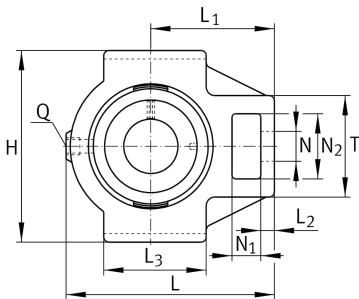
**TTUE55-XL** [↗](#)

## Take-up housing unit

Take-up housing units TTUE, cast iron housing, radial insert ball bearing with eccentric locking collar, T seals

X-life

## Technical information



## Your current product variant

Material	GG	Grey cast iron
----------	----	----------------

## Main Dimensions &amp; Performance Data

d	55 mm	Bore diameter
H	145 mm	Height
L	169 mm	Length total
B <sub>1</sub>	71,4 mm	Locking collar total width
m	4,32 kg	Weight

## Mounting dimensions

A <sub>1</sub>	22 mm	Width guidance groove
	H13	Width guidance groove clearance
H <sub>1</sub>	130 mm	Distance guidance grooves
	0,15 mm	Upper distance guidance groove tolerance
	-0,15 mm	Lower distance guidance groove tolerance
N	35 mm	Fixing bore



### Dimensions

L <sub>1</sub>	104 mm	Distance shaft axis
L <sub>2</sub>	17 mm	Length fixed link
L <sub>3</sub>	95 mm	Length guidance groove
A	60 mm	Width housing fixing side
N <sub>1</sub>	26 mm	Width recess
N <sub>2</sub>	63,5 mm	Height recess
S <sub>1</sub>	43,6 mm	Distance of raceway to locking collar
T	102 mm	Height housing fixing side
Q	M6	Connection thread for lubrication
A <sub>2</sub>	42 mm	Width housing

### Additional information

TUE11	Housing
GE55-XL-KTT-B	Bearing designation

### Temperature range

T <sub>min</sub>	-20 °C	Operating temperature min.
T <sub>max</sub>	120 °C	Operating temperature max.