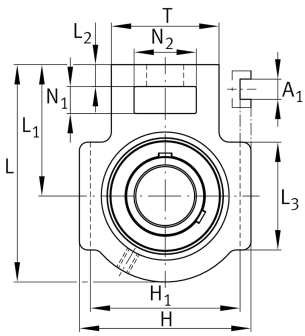


**FAG****UCT206-19** [↗](#)

Take-up housing unit

Housing units UCT, cast iron housing, radial insert ball bearing with grub screws in inner ring, RSR seals, for linear motion

Technical information

**Your current product variant**

Material	GG	Grey cast iron
----------	----	----------------

Main Dimensions & Performance Data

d	30,16 mm	Bore diameter
H	102 mm	Height
L	113 mm	Length total
C _{0r}	11.300 N	Basic static load rating, radial
C _{ur}	590 N	Fatigue load limit, radial
C _r	20.700 N	Basic dynamic load rating, radial
≈m	1,22 kg	Weight

Mounting dimensions

A ₁	12 mm	Width guidance groove
	0,2 mm	Upper width guidance groove tolerance
	0 mm	Lower width guidance groove tolerance
H ₁	89 mm	Distance guidance grooves
	0 mm	Upper distance guidance groove tolerance
	-0,5 mm	Lower distance guidance groove tolerance
N	22 mm	Fixing bore



Dimensions

L ₁	70 mm	Distance shaft axis
L ₂	10 mm	Length fixed link
L ₃	57 mm	Length guidance groove
A	37 mm	Width housing fixing side
N ₁	16 mm	Width recess
N ₂	37 mm	Height recess
B	38,1 mm	Width inner ring
S ₁	22,2 mm	Distance of raceway to locking collar
T	56 mm	Height housing fixing side
Q	M6	Connection thread for lubrication
A ₂	28 mm	Width housing

Additional information

T206	Housing
UC206-19	Bearing designation

Temperature range

T _{min}	-20 °C	Operating temperature min.
T _{max}	120 °C	Operating temperature max.