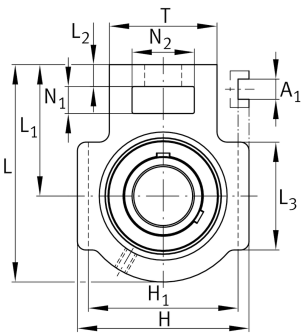


**FAG****UCT211-32**

Take-up housing unit

Housing units UCT, cast iron housing, radial insert ball bearing with grub screws in inner ring, RSR seals, for linear motion

Technical information

**Your current product variant**

| | | |
|----------|----|----------------|
| Material | GG | Grey cast iron |
|----------|----|----------------|

Main Dimensions & Performance Data

| | | |
|-----------------|----------|-----------------------------------|
| d | 50,8 mm | Bore diameter |
| H | 146 mm | Height |
| L | 171 mm | Length total |
| C _{0r} | 29.000 N | Basic static load rating, radial |
| C _{ur} | 1.520 N | Fatigue load limit, radial |
| C _r | 46.000 N | Basic dynamic load rating, radial |
| ≈m | 3,98 kg | Weight |

Mounting dimensions

| | | |
|----------------|---------|--|
| A ₁ | 22 mm | Width guidance groove |
| | 0,3 mm | Upper width guidance groove tolerance |
| | 0 mm | Lower width guidance groove tolerance |
| H ₁ | 130 mm | Distance guidance grooves |
| | 0 mm | Upper distance guidance groove tolerance |
| | -0,8 mm | Lower distance guidance groove tolerance |
| N | 35 mm | Fixing bore |



Dimensions

| | | |
|----------------|---------|---------------------------------------|
| L ₁ | 106 mm | Distance shaft axis |
| L ₂ | 19 mm | Length fixed link |
| L ₃ | 95 mm | Length guidance groove |
| A | 64 mm | Width housing fixing side |
| N ₁ | 25 mm | Width recess |
| N ₂ | 64 mm | Height recess |
| B | 55,6 mm | Width inner ring |
| S ₁ | 33,4 mm | Distance of raceway to locking collar |
| T | 102 mm | Height housing fixing side |
| Q | M6 | Connection thread for lubrication |
| A ₂ | 38 mm | Width housing |

Additional information

| | |
|----------|---------------------|
| T211 | Housing |
| UC211-32 | Bearing designation |

Temperature range

| | | |
|------------------|--------|----------------------------|
| T _{min} | -20 °C | Operating temperature min. |
| T _{max} | 120 °C | Operating temperature max. |