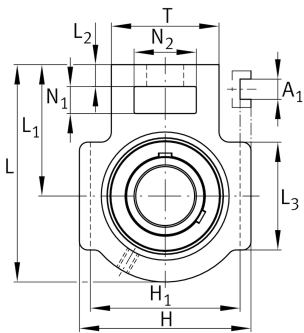


**FAG****UCT213-40** [↗](#)

## Take-up housing unit

Housing units UCT, cast iron housing, radial insert ball bearing with grub screws in inner ring, RSR seals, for linear motion

## Technical information

**Your current product variant**

Material	GG	Grey cast iron
----------	----	----------------

**Main Dimensions & Performance Data**

d	63,5 mm	Bore diameter
H	167 mm	Height
L	224 mm	Length total
C <sub>0r</sub>	40.000 N	Basic static load rating, radial
C <sub>ur</sub>	2.090 N	Fatigue load limit, radial
C <sub>r</sub>	61.000 N	Basic dynamic load rating, radial
≈m	6,68 kg	Weight

**Mounting dimensions**

A <sub>1</sub>	26 mm	Width guidance groove
	0,3 mm	Upper width guidance groove tolerance
	0 mm	Lower width guidance groove tolerance
H <sub>1</sub>	151 mm	Distance guidance grooves
	0 mm	Upper distance guidance groove tolerance
	-0,8 mm	Lower distance guidance groove tolerance
N	41 mm	Fixing bore



### Dimensions

L <sub>1</sub>	137 mm	Distance shaft axis
L <sub>2</sub>	21 mm	Length fixed link
L <sub>3</sub>	121 mm	Length guidance groove
A	70 mm	Width housing fixing side
N <sub>1</sub>	32 mm	Width recess
N <sub>2</sub>	70 mm	Height recess
B	65,1 mm	Width inner ring
S <sub>1</sub>	39,7 mm	Distance of raceway to locking collar
T	111 mm	Height housing fixing side
Q	M6	Connection thread for lubrication
A <sub>2</sub>	44 mm	Width housing

### Additional information

T213	Housing
UC213-40	Bearing designation

### Temperature range

T <sub>min</sub>	-20 °C	Operating temperature min.
T <sub>max</sub>	120 °C	Operating temperature max.