

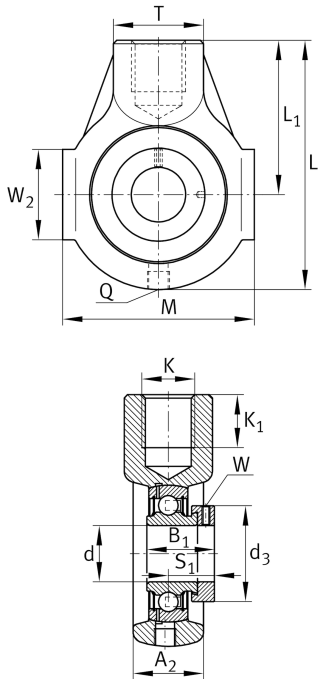
**PHE20-XL**

Take-up housing unit

Take-up housing units PHE, cast iron housing, radial insert ball bearing with eccentric locking collar, P seals

X-life

Technical information



Your current product variant

Material	GG	Grey cast iron
----------	----	----------------

Main Dimensions & Performance Data

d	20 mm	Bore diameter
L	91 mm	Length total
M	65 mm	Housing total width
A ₂	25 mm	Width housing
≈m	0,55 kg	Weight

Mounting dimensions

K	M16	Thread fixing bore
K ₁	21 mm	Thread depth

Dimensions

L ₁	58 mm	Distance shaft axis
T	30 mm	Height housing fixing side
W ₂	38 mm	Length of guidance face
Q	M6	Connection thread for lubrication



Additional information

HE04	Housing
GRAE20-XL-NPP-B	Bearing designation

Temperature range

T _{min}	-20 °C	Operating temperature min.
T _{max}	120 °C	Operating temperature max.