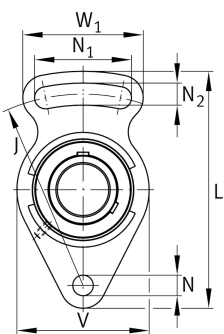


**FAG****UCFA205-14** [↗](#)

Take-up housing unit

Housing units UCFA, cast iron housing, radial insert ball bearing with grub screws in inner ring, RSR seals, for swivel motion

Technical information

**Your current product variant**

Material	GG	Grey cast iron
----------	----	----------------

Main Dimensions & Performance Data

d	22,23 mm	Bore diameter
L	125 mm	Length total
U	35,8 mm	Total height unit
≈m	0,65 kg	Weight

Mounting dimensions

N	12 mm	Fixing bore
N ₁	51 mm	Length (slot)
N ₂	12 mm	Width (slot)
J	98 mm	Distance fixing bore

Dimensions

A ₁	14 mm	Thickness of flange
A ₂	16 mm	Distance raceway
A	27 mm	Height housing
V	68 mm	Shoulder diameter housing
W	66 mm	Width housing slot side
Q	M6	Connection thread for lubrication



Additional information

FA205	Housing
UC205-14	Bearing designation

Temperature range

T _{min}	-20 °C	Operating temperature min.
T _{max}	120 °C	Operating temperature max.