

**MSTU25-XL**

Take-up housing unit

Take-up housing units MSTU, sheet steel housing, radial insert ball bearing with eccentric locking collar, P seals, with relubrication facility

X-life

Technical information

Your current product variant

Material	Steel sheet
----------	-------------

Main Dimensions & Performance Data

d	25 mm	Bore diameter
L	203,2 mm	Length total
H	104,8 mm	Height flange
C Or G	3.900 N	Load carrying capacity (housing)
U	33,8 mm	Total height unit
m	0,59 kg	Weight

Mounting dimensions

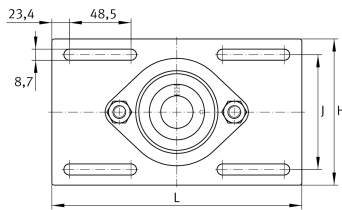
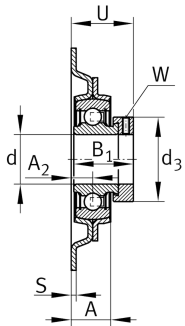
J	80,2 mm	Distance fixing bore
---	---------	----------------------

Dimensions

A	19 mm	Height housing
A ₂	10,3 mm	Distance raceway
S	2 mm	Thickness of flange

Additional information

GEH52-MSTU	Housing
RAE25-XL-NPP-B	Bearing designation





Temperature range

T _{min}	-20 °C	Operating temperature min.
T _{max}	120 °C	Operating temperature max.