

**MSTU30-XL**

## Take-up housing unit

Take-up housing units MSTU, sheet steel housing, radial insert ball bearing with eccentric locking collar, P seals, with relubrication facility

X-life

## Technical information

## Your current product variant

Material	Steel sheet
----------	-------------

## Main Dimensions &amp; Performance Data

d	30 mm	Bore diameter
L	203,2 mm	Length total
H	114,3 mm	Height flange
C Or G	3.900 N	Load carrying capacity (housing)
U	37,8 mm	Total height unit
≈m	0,84 kg	Weight

## Mounting dimensions

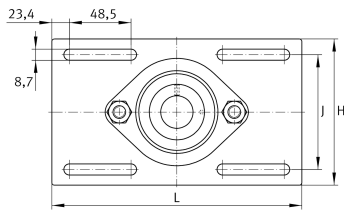
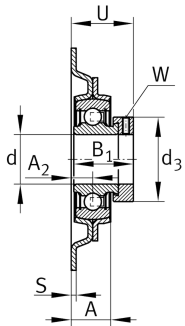
J	89,2 mm	Distance fixing bore
---	---------	----------------------

## Dimensions

A	21,1 mm	Height housing
A <sub>2</sub>	12,1 mm	Distance raceway
S	2,5 mm	Thickness of flange

## Additional information

GEH62-MSTU	Housing
RAE30-XL-NPP-B	Bearing designation





View product details on medias

25.05.2026, 20:24:52 UTC

SCHAEFFLER

### Temperature range

---

T <sub>min</sub>	-20 °C	Operating temperature min.
------------------	--------	----------------------------

T <sub>max</sub>	120 °C	Operating temperature max.
------------------	--------	----------------------------