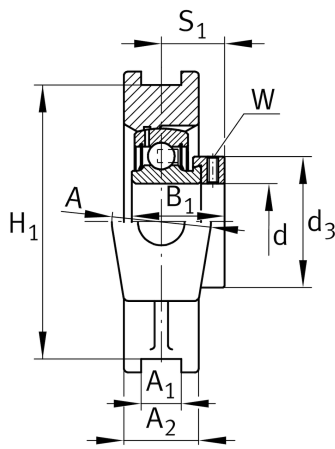
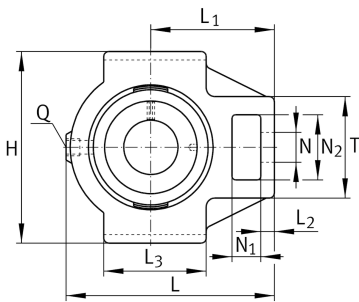


**PTUE35-TV-FA125.5**

Take-up housing unit

Take-up housing unit PTUE...-TV, RIBB plastic

## Technical information

**Your current product variant**

Special material	TV	Plastic housing
Material	TV	Plastic
Manufacturing instruction	FA125.5	Bearing with Corrotect coating

**Main Dimensions & Performance Data**

d	35 mm	Bore diameter
L	125 mm	Length
M	102,5 mm	Housing total width
≈m	0,82 kg	Weight

**Mounting dimensions**

L <sub>1</sub>	76 mm	Distance shaft axis
L <sub>3</sub>	63 mm	Length guidance grooves
A <sub>1</sub>	12 mm	Width guidance groove
H <sub>1</sub>	89 mm	Distance guidance groove
K	M16	Thread fixing bore
Q	1/4-28 UNF	Connection thread for lubrication

**Dimensions**

T	40 mm	Height (housing, mounting side)
A <sub>2</sub>	34,5 mm	Width housing



### Additional information

TUE07-TV	Housing
GRAE35-NPP-B-FA107/125.5	Bearing designation
KASK07-S-G	End cap
KASK07-S-R-NBR	Open protecting cap

### Temperature range

T <sub>min</sub>	-35 °C	Operating temperature min.
T <sub>max</sub>	100 °C	Operating temperature max.