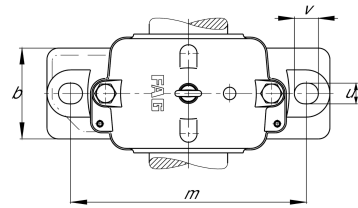
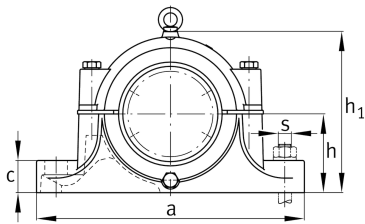


**FAG****S3026-H-N-FZ-AB-L**

Plummer block housing

Split plummer block housing for spherical roller bearings with conical bore and clamping sleeve

## Technical information

**Main Dimensions & Performance Data**

d <sub>1</sub>	115 mm	Shaft diameter
a	420 mm	Length base
h <sub>1</sub>	239 mm	Total height
g	160 mm	Width housing
≈m	24,254 kg	Weight

**Dimensions**

	M10x1	Connection thread for lubrication
b	120 mm	Width base
c	45 mm	Height foot
D	200 mm	Outside diameter bearing
g <sub>3</sub>	18 mm	Wall thickness g <sub>3</sub>
h	125 mm	Distance shaft axis
m	350 mm	Distance fixing bore
s	M24	Size of fixing screw
<b>s</b>	<b>25,4 mm</b>	<b>Screw size</b>
u	30 mm	Width oblong hole
v	36 mm	Lenght oblong hole