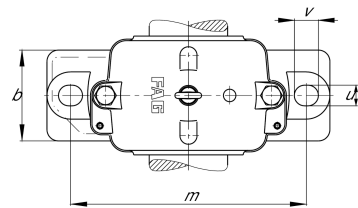
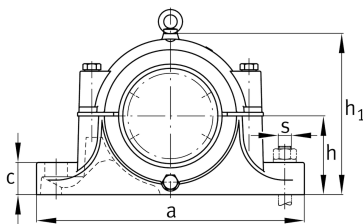


**FAG****S3028-H-N-FZ-AB-L**

Plummer block housing

Split plummer block housing for spherical roller bearings with conical bore and clamping sleeve

Technical information

**Main Dimensions & Performance Data**

d ₁	125 mm	Shaft diameter
a	420 mm	Length base
h ₁	259 mm	Total height
g	170 mm	Width housing
≈m	24,6 kg	Weight

Dimensions

	M10x1	Connection thread for lubrication
b	120 mm	Width base
c	45 mm	Height foot
D	210 mm	Outside diameter bearing
g ₃	21 mm	Wall thickness g ₃
h	140 mm	Distance shaft axis
m	350 mm	Distance fixing bore
s	M24	Size of fixing screw
s	25,4 mm	Screw size
u	30 mm	Width oblong hole
v	36 mm	Lenght oblong hole