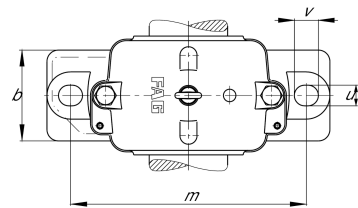
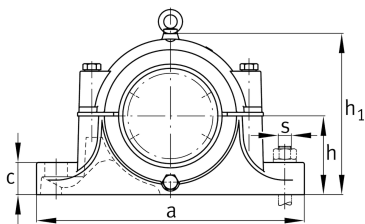


**FAG****S3032-H-N-FZ-AB-L**

Plummer block housing

Split plummer block housing for spherical roller bearings with conical bore and clamping sleeve

Technical information

**Main Dimensions & Performance Data**

d ₁	140 mm	Shaft diameter
a	470 mm	Length base
h ₁	288 mm	Total height
g	190 mm	Width housing
≈m	36,8 kg	Weight

Dimensions

	M10x1	Connection thread for lubrication
b	130 mm	Width base
c	50 mm	Height foot
D	240 mm	Outside diameter bearing
g ₃	21 mm	Wall thickness g ₃
h	150 mm	Distance shaft axis
m	390 mm	Distance fixing bore
s	M24	Size of fixing screw
s	25,4 mm	Screw size
u	30 mm	Width oblong hole
v	36 mm	Lenght oblong hole