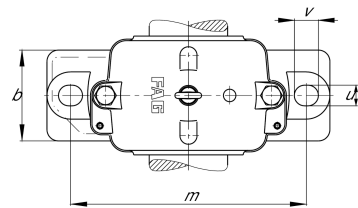
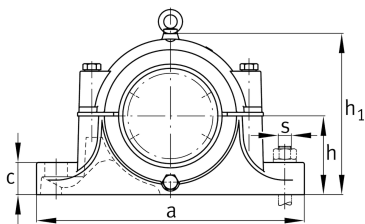


**FAG****S3034-H-N-FZ-AB-L**

Plummer block housing

Split plummer block housing for spherical roller bearings with conical bore and clamping sleeve

## Technical information

**Main Dimensions & Performance Data**

d <sub>1</sub>	150 mm	Shaft diameter
a	540 mm	Length base
h <sub>1</sub>	320 mm	Total height
g	200 mm	Width housing
≈m	48,8 kg	Weight

**Dimensions**

	M10x1	Connection thread for lubrication
b	160 mm	Width base
c	55 mm	Height foot
D	260 mm	Outside diameter bearing
g <sub>3</sub>	25 mm	Wall thickness g <sub>3</sub>
h	160 mm	Distance shaft axis
m	450 mm	Distance fixing bore
s	M30	Size of fixing screw
<b>s</b>	<b>28,575 mm</b>	<b>Screw size</b>
u	36 mm	Width oblong hole
v	48 mm	Length oblong hole