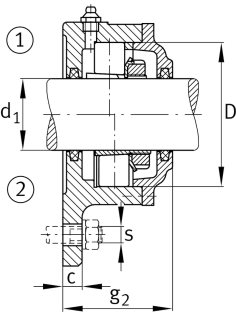


**FAG****F505-B-L**

Flanged housing

Flanged housing for various bearing types,
with conical bore and clamping sleeve,
continuous shaft

Technical information

**Main Dimensions & Performance Data**

d ₁	20 mm	Shaft diameter
a	110 mm	Flange width
h ₁	100 mm	Height flange
g ₂	55 mm	Total width with lid g ₂
	3	Number of fastening holes
≈m	1,2 kg	Weight

Dimensions

	M10x1	Connection thread for lubrication
c	10 mm	Thickness of flange
D	52 mm	Outside diameter bearing
g ₄	16 mm	Distance flange to bearing seat
h	38 mm	Distance shaft axis
m	96 mm	Pich circle diameter fixing holes
s	M10	Size of fixing screws