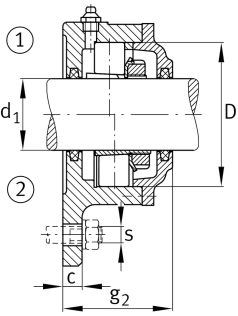


**FAG****F506-B-L**

Flanged housing

Flanged housing for various bearing types,
with conical bore and clamping sleeve,
continuous shaft

Technical information

**Main Dimensions & Performance Data**

d ₁	25 mm	Shaft diameter
a	130 mm	Flange width
h ₁	117 mm	Height flange
g ₂	57 mm	Total width with lid g ₂
	3	Number of fastening holes
≈m	1,6 kg	Weight

Dimensions

	M10x1	Connection thread for lubrication
c	12 mm	Thickness of flange
D	62 mm	Outside diameter bearing
g ₄	18 mm	Distance flange to bearing seat
h	44 mm	Distance shaft axis
m	116 mm	Pich circle diameter fixing holes
s	M10	Size of fixing screws