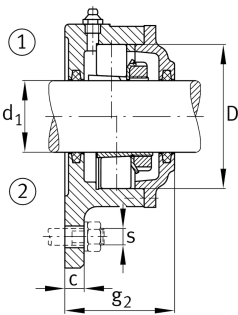


**FAG****F508-B-L**

Flanged housing

Flanged housing for various bearing types,
with conical bore and clamping sleeve,
continuous shaft

Technical information

**Main Dimensions & Performance Data**

d ₁	35 mm	Shaft diameter
a	160 mm	Flange width
h ₁	143 mm	Height flange
g ₂	66 mm	Total width with lid g ₂
	3	Number of fastening holes
≈m	2,7 kg	Weight

Dimensions

	M10x1	Connection thread for lubrication
c	12 mm	Thickness of flange
D	80 mm	Outside diameter bearing
g ₄	22 mm	Distance flange to bearing seat
h	54 mm	Distance shaft axis
m	140 mm	Pich circle diameter fixing holes
s	M12	Size of fixing screws