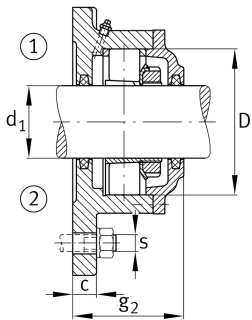


**FAG****F509-WB-L**

Flanged housing

Flanged housing for various bearing types,
wide version with conical bore and clamping
sleeve, continuous shaft

Technical information

**Main Dimensions & Performance Data**

d ₁	40 mm	Shaft diameter
a	180 mm	Flange width
h ₁	160 mm	Height flange
g ₂	74 mm	Total width with lid g ₂
	3	Number of fastening holes
≈m	3,629 kg	Weight

Dimensions

	M10x1	Connection thread for lubrication
c	15 mm	Thickness of flange
D	85 mm	Outside diameter bearing
g ₄	22 mm	Distance flange to bearing seat
h	60 mm	Distance shaft axis
m	160 mm	Pich circle diameter fixing holes
s	M12	Size of fixing screws