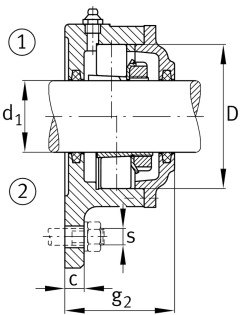
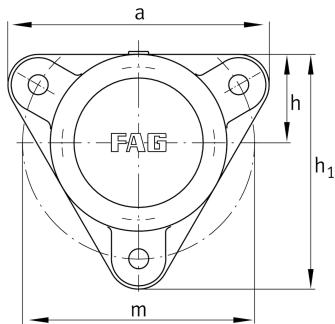


**FAG****F511-B-L**

Flanged housing

Flanged housing for various bearing types,
with conical bore and clamping sleeve,
continuous shaft

Technical information

**Main Dimensions & Performance Data**

d_1	50 mm	Shaft diameter
a	190 mm	Flange width
h_1	170 mm	Height flange
g_2	76 mm	Total width with lid g_2
	3	Number of fastening holes
$\approx m$	4,2 kg	Weight

Dimensions

	M10x1	Connection thread for lubrication
c	16 mm	Thickness of flange
D	100 mm	Outside diameter bearing
g_4	23 mm	Distance flange to bearing seat
h	65 mm	Distance shaft axis
m	170 mm	Pich circle diameter fixing holes
s	M12	Size of fixing screws