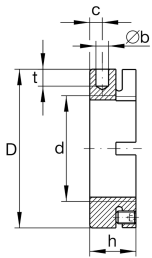
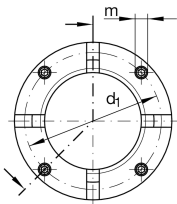


**AM25** **Precision locknut**

Precision locknuts AM, segments for clamping

**Technical information****Main Dimensions & Performance Data**

d	M25X1,5	Thread
D	45 mm	Outside diameter
h	20 mm	Height
F <sub>aB</sub>	205.000 N	Breaking load, axial
M <sub>L</sub>	60 Nm	Breakawag
M <sub>AL</sub>	25 Nm	Mounting torque reference
M <sub>m</sub>	0,49 kg*cm <sup>2</sup>	Mass moment of inertia
≈m	135,94 g	Weight

**Mounting dimensions**

M <sub>m</sub>	5 Nm	Mounting torque set screw
----------------	------	---------------------------

**Dimensions**

b	5 mm	Bore diameter blind hole
t	6 mm	Depth blind hole
d <sub>1</sub>	38 mm	Pitch circle diameter 1 (holes)
c	6 mm	Distance bore
m	M6	Threaded - threaded pin
	H11	Bore diameter blind hole housing fit