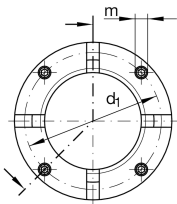


**AM35** **Precision locknut**

Precision locknuts AM, segments for clamping

Technical information

**Main Dimensions & Performance Data**

| | | |
|-----------------|------------------------|---------------------------|
| d | M35X1,5 | Thread |
| D | 65 mm | Outside diameter |
| h | 22 mm | Height |
| F _{aB} | 330.000 N | Breaking load, axial |
| M _L | 100 Nm | Breakawag |
| M _{AL} | 40 Nm | Mounting torque reference |
| M _m | 2,4 kg*cm ² | Mass moment of inertia |
| ≈m | 320 g | Weight |

Mounting dimensions

| | | |
|----------------|------|---------------------------|
| M _m | 5 Nm | Mounting torque set screw |
|----------------|------|---------------------------|

Dimensions

| | | |
|----------------|-------|--------------------------------------|
| b | 6 mm | Bore diameter blind hole |
| t | 8 mm | Depth blind hole |
| d ₁ | 58 mm | Pitch circle diameter 1 (holes) |
| c | 6 mm | Distance bore |
| m | M6 | Threaded - threaded pin |
| | H11 | Bore diameter blind hole housing fit |