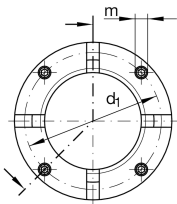


**AM35/58**

Precision locknut

Precision locknuts AM, segments for clamping

Technical information

**Main Dimensions & Performance Data**

d	M35X1,5	Thread
D	58 mm	Outside diameter
h	20 mm	Height
F _{aB}	280.000 N	Breaking load, axial
M _L	90 Nm	Breakawag
M _{AL}	40 Nm	Mounting torque reference
M _m	1,3 kg*cm ²	Mass moment of inertia
≈m	208 g	Weight

Mounting dimensions

M _m	5 Nm	Mounting torque set screw
----------------	------	---------------------------

Dimensions

b	5 mm	Bore diameter blind hole
t	7 mm	Depth blind hole
d ₁	51 mm	Pitch circle diameter 1 (holes)
c	6 mm	Distance bore
m	M6	Threaded - threaded pin
	H11	Bore diameter blind hole housing fit