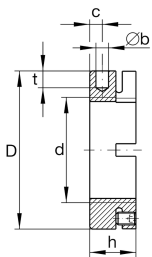
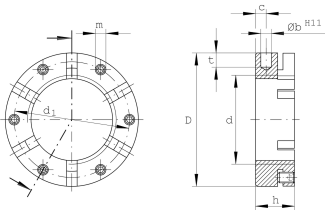


**AM45**

## Precision locknut

Precision locknuts AM, segments for clamping

## Technical information

**Main Dimensions & Performance Data**

d	M45X1,5	Thread
D	70 mm	Outside diameter
h	22 mm	Height
F <sub>aB</sub>	360.000 N	Breaking load, axial
M <sub>L</sub>	220 Nm	Breakawag
M <sub>AL</sub>	65 Nm	Mounting torque reference
M <sub>m</sub>	2,9 kg*cm <sup>2</sup>	Mass moment of inertia
≈m	325 g	Weight

**Mounting dimensions**

M <sub>m</sub>	5 Nm	Mounting torque set screw
----------------	------	---------------------------

**Dimensions**

b	6 mm	Bore diameter blind hole
t	8 mm	Depth blind hole
d <sub>1</sub>	63 mm	Pitch circle diameter 1 (holes)
c	6 mm	Distance bore
m	M6	Threaded - threaded pin
	H11	Bore diameter blind hole housing fit