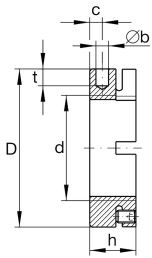
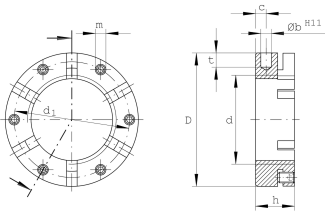
**AM60**

Precision locknut

Precision locknuts AM, segments for clamping

Technical information

**Main Dimensions & Performance Data**

d	M60X2	Thread
D	90 mm	Outside diameter
h	26 mm	Height
F _{aB}	550.000 N	Breaking load, axial
M _L	365 Nm	Breakawag
M _{AL}	100 Nm	Mounting torque reference
M _m	9,4 kg*cm ²	Mass moment of inertia
≈m	650 g	Weight

Mounting dimensions

M _m	15 Nm	Mounting torque set screw
----------------	-------	---------------------------

Dimensions

b	6 mm	Bore diameter blind hole
t	8 mm	Depth blind hole
d ₁	80 mm	Pitch circle diameter 1 (holes)
c	8 mm	Distance bore
m	M8	Threaded - threaded pin
	H11	Bore diameter blind hole housing fit