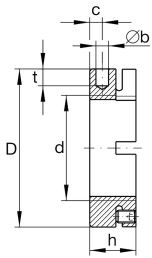
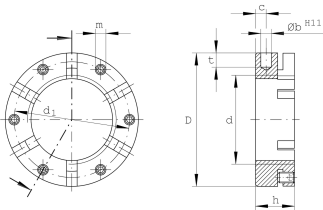


**AM70**

Precision locknut

Precision locknuts AM, segments for clamping

Technical information

**Main Dimensions & Performance Data**

d	M70X2	Thread
D	100 mm	Outside diameter
h	28 mm	Height
F _{aB}	650.000 N	Breaking load, axial
M _L	450 Nm	Breakawag
M _{AL}	130 Nm	Mounting torque reference
M _m	14,7 kg*cm ²	Mass moment of inertia
≈m	780 g	Weight

Mounting dimensions

M _m	15 Nm	Mounting torque set screw
----------------	-------	---------------------------

Dimensions

b	8 mm	Bore diameter blind hole
t	10 mm	Depth blind hole
d ₁	90 mm	Pitch circle diameter 1 (holes)
c	9 mm	Distance bore
m	M8	Threaded - threaded pin
	H11	Bore diameter blind hole housing fit