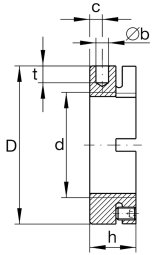
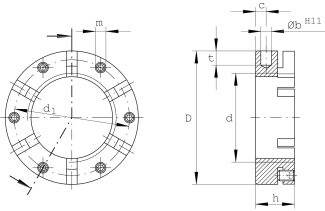
**AM85**

Precision locknut

Precision locknuts AM, segments for clamping

Technical information

**Main Dimensions & Performance Data**

d	M85X2	Thread
D	115 mm	Outside diameter
h	30 mm	Height
F _{aB}	690.000 N	Breaking load, axial
M _L	930 Nm	Breakawag
M _{AL}	180 Nm	Mounting torque reference
M _m	24,8 kg*cm ²	Mass moment of inertia
≈m	850,27 g	Weight

Mounting dimensions

M _m	20 Nm	Mounting torque set screw
----------------	-------	---------------------------

Dimensions

b	8 mm	Bore diameter blind hole
t	10 mm	Depth blind hole
d ₁	102 mm	Pitch circle diameter 1 (holes)
c	10 mm	Distance bore
m	M10	Threaded - threaded pin
	H11	Bore diameter blind hole housing fit