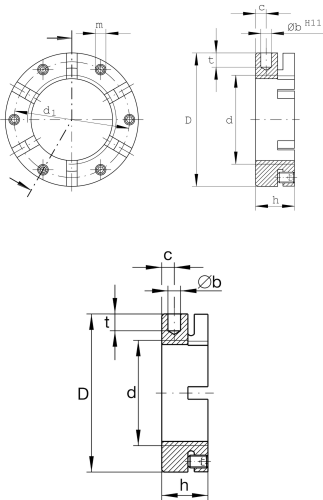


**AM90**

Precision locknut

Precision locknuts AM, segments for clamping

Technical information

**Main Dimensions & Performance Data**

d	M90X2	Thread
D	130 mm	Outside diameter
h	32 mm	Height
F _{aB}	900.000 N	Breaking load, axial
M _L	1.100 Nm	Breakawag
M _{AL}	200 Nm	Mounting torque reference
M _m	48 kg*cm ²	Mass moment of inertia
≈m	1,52 kg	Weight

Mounting dimensions

M _m	20 Nm	Mounting torque set screw
----------------	-------	---------------------------

Dimensions

b	8 mm	Bore diameter blind hole
t	10 mm	Depth blind hole
d ₁	118 mm	Pitch circle diameter 1 (holes)
c	13 mm	Distance bore
m	M10	Threaded - threaded pin
	H11	Bore diameter blind hole housing fit