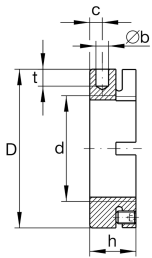
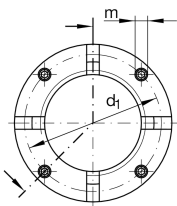


**AM40/85**

Precision locknut

Precision locknuts AM, segments for clamping

Technical information

**Main Dimensions & Performance Data**

d	M40X1,5	Thread
D	85 mm	Outside diameter
h	32 mm	Height
F _{aB}	570.000 N	Breaking load, axial
M _L	120 Nm	Breakawag
M _{AL}	55 Nm	Mounting torque reference
M _m	7,6 kg*cm ²	Mass moment of inertia
≈m	0,788 kg	Weight

Mounting dimensions

M _m	5 Nm	Mounting torque set screw
----------------	------	---------------------------

Dimensions

b	6 mm	Bore diameter blind hole
t	8 mm	Depth blind hole
d ₁	58 mm	Pitch circle diameter 1 (holes)
c	6 mm	Distance bore
m	M6	Threaded - threaded pin
	H11	Bore diameter blind hole housing fit