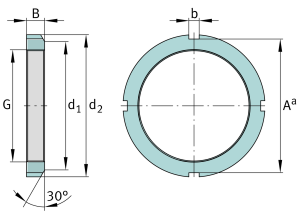
**FAG****KMO**

Locknut

Locknuts KM, main dimensions to DIN 981

## Technical information



### Main Dimensions & Performance Data

G	M10x0,75	Thread
d <sub>2</sub>	18 mm	Outerside diameter
B	4 mm	Width
≈m	4,6 g	Weight

### Mounting dimensions

d <sub>1</sub>	13,5 mm	Chamfer diameter
b	3 mm	Width retaining slot
A <sup>a</sup>	14 mm	Groove base distance

### Additional information

F	6.000 N	Axial load capacity, static
	MB0	Fuse
	30 °	Chamfer angle