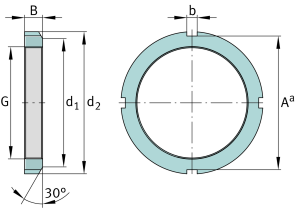
**FAG****KM16**

Locknut

Locknuts KM, main dimensions to DIN 981

Technical information

**Main Dimensions & Performance Data**

G	M80x2	Thread
d ₂	105 mm	Outerside diameter
B	15 mm	Width
≈m	426,28 g	Weight

Mounting dimensions

d ₁	95 mm	Chamfer diameter
b	8 mm	Width retaining slot
A ^a	98 mm	Groove base distance

Additional information

F	190.000 N	Axial load capacity, static
	MB16	Fuse
	30 °	Chamfer angle