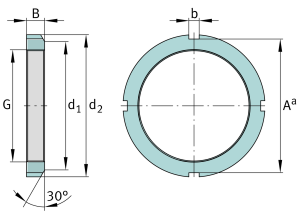


**FAG****KM17**

Locknut

Locknuts KM, main dimensions to DIN 981

Technical information



Main Dimensions & Performance Data

G	M85x2	Thread
d ₂	110 mm	Outerside diameter
B	16 mm	Width
≈m	488,6 g	Weight

Mounting dimensions

d ₁	102 mm	Chamfer diameter
b	8 mm	Width retaining slot
A ^a	103 mm	Groove base distance

Additional information

F	210.000 N	Axial load capacity, static
	MB17	Fuse
	30 °	Chamfer angle