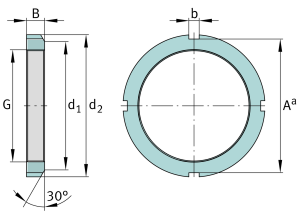
**FAG****KM5**

Locknut

Locknuts KM, main dimensions to DIN 981

Technical information



Main Dimensions & Performance Data

G	M25x1,5	Thread
d ₂	38 mm	Outerside diameter
B	7 mm	Width
≈m	34 g	Weight

Mounting dimensions

d ₁	32 mm	Chamfer diameter
b	5 mm	Width retaining slot
A ^a	34 mm	Groove base distance

Additional information

F	24.000 N	Axial load capacity, static
	MB5	Fuse
	30 °	Chamfer angle