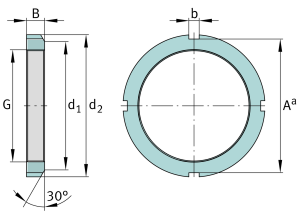
**FAG****KM8**

Locknut

Locknuts KM, main dimensions to DIN 981

## Technical information



### Main Dimensions & Performance Data

|                |         |                    |
|----------------|---------|--------------------|
| G              | M40x1,5 | Thread             |
| d <sub>2</sub> | 58 mm   | Outerside diameter |
| B              | 9 mm    | Width              |
| ≈m             | 94 g    | Weight             |

### Mounting dimensions

|                |       |                      |
|----------------|-------|----------------------|
| d <sub>1</sub> | 50 mm | Chamfer diameter     |
| b              | 6 mm  | Width retaining slot |
| A <sup>a</sup> | 53 mm | Groove base distance |

### Additional information

|   |          |                             |
|---|----------|-----------------------------|
| F | 58.000 N | Axial load capacity, static |
|   | MB8      | Fuse                        |
|   | 30 °     | Chamfer angle               |