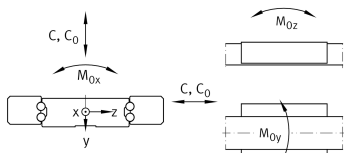
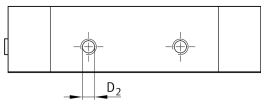
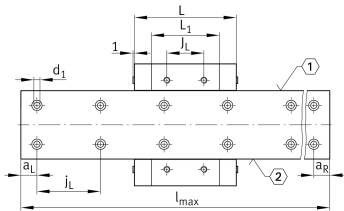
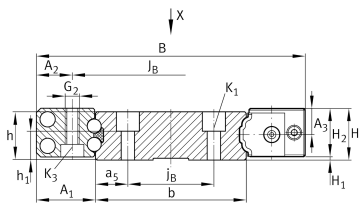


KUVS10-B

Linear recirculating ball bearing unit

linear recirculating ball bearing units for guideway with raceways on both sides

Technical information



Your current product variant

Size code	10
Suffix	B

Main Dimensions & Performance Data

H	11 mm	Height system
B	51,6 mm	Width system
L	47 mm	Length linear recirculating ball bearing units
h	10 mm	Height rail
b	31,8 mm	Width rail
l _{max}	1.960 mm	Max. length rail
C	5.700 N	Load capacity dyn C
C ₀	10.600 N	Load capacity dyn
M _{0X}	203 Nm	Moment ratings M0X
M _{0Y}	51 Nm	Moment ratings M0Y
M _{0Z}	51 Nm	Moment ratings M0Z
≈m	24,836 g	Weight



Mounting dimensions

A ₁	9,9 mm	
A ₂	5,5 mm	
J _B	40,6 mm	
j _B	18 mm	
a ₅	6,9 mm	
L ₁	29,8 mm	
J _L	15 mm	
j _L	40 mm	
a _{Lmin}	20 mm	
a _{Lmax}	34 mm	
a _{Rmin}	20 mm	
a _{Rmax}	34 mm	
H ₁	0,5 mm	Free space, system dimension
H ₂	10,5 mm	Height linear recirculating ball bearing units
A ₃	6 mm	
h ₁	3,4 mm	
K ₁	M3	Thread
K _{1 MA}	2,5 Nm	Tightening torque
G ₂	M3	Thread
G _{2 MA}	1,5 Nm	Tightening torque
d ₁	3,8 mm	Diameter

Related products

TKVD32	Associated rail(s)
KA8-TN	Closing plug rail