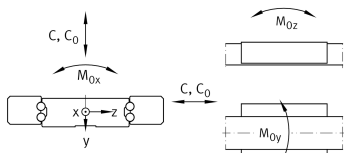
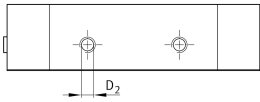
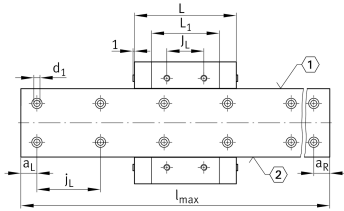
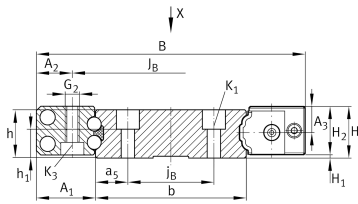


## KUVS13-B

Linear recirculating ball bearing unit

linear recirculating ball bearing units for guideway with raceways on both sides

### Technical information



### Your current product variant

Size code	13
Suffix	B

### Main Dimensions & Performance Data

H	19 mm	Height system
B	75 mm	Width system
L	71 mm	Length linear recirculating ball bearing units
h	18 mm	Height rail
b	42 mm	Width rail
l <sub>max</sub>	2.940 mm	Max. length rail
C	13.500 N	Load capacity dyn C
C <sub>0</sub>	26.000 N	Load capacity dyn
M <sub>0X</sub>	648 Nm	Moment ratings M0X
M <sub>0Y</sub>	211 Nm	Moment ratings M0Y
M <sub>0Z</sub>	211 Nm	Moment ratings M0Z
≈m	85 g	Weight



### Mounting dimensions

A <sub>1</sub>	16,5 mm	
A <sub>2</sub>	10 mm	
J <sub>B</sub>	55 mm	
j <sub>B</sub>	24 mm	
a <sub>5</sub>	9 mm	
L <sub>1</sub>	48,5 mm	
J <sub>L</sub>	20 mm	
j <sub>L</sub>	60 mm	
a <sub>Lmin</sub>	20 mm	
a <sub>Lmax</sub>	53 mm	
a <sub>Rmin</sub>	20 mm	
a <sub>Rmax</sub>	53 mm	
H <sub>1</sub>	5,5 mm	Free space, system dimension
H <sub>2</sub>	13,5 mm	Height linear recirculating ball bearing units
A <sub>3</sub>	7,3 mm	
h <sub>1</sub>	11,4 mm	
K <sub>1</sub>	M3	Thread
K <sub>1 MA</sub>	2,5 Nm	Tightening torque
G <sub>2</sub>	M4	Thread
G <sub>2 MA</sub>	3 Nm	Tightening torque
K <sub>3</sub>	M3	Thread
K <sub>3 MA</sub>	2,5 Nm	Tightening torque
d <sub>1</sub>	3,8 mm	Diameter
D <sub>2</sub>	3,3 mm	Diameter



View product details on medias

26.04.2026, 07:00:19 UTC

**SCHAEFFLER**

### Related products

---

KUVS13-B	Linear recirculating ball bearing unit
----------	--

TKVD42, TKVD14	Associated rail(s)
----------------	--------------------

KA8-TN	Closing plug rail
--------	-------------------